

Rowe 3600

User Manual



SetPlot

Drivers

PlotAdmin

PlotSupport

Foldeditor

Order file

Stamps and Labels

Update report

Betriebsanleitung



Introduction

The Plotter **Rowe 3600** is state of the art and has been designed and built in accordance with recognized technical norms. Its use can nevertheless represent a hazard to health or to material assets. The plotting system may only be used when it is in perfect technical working order, for the purpose for which it is intended, in a safety and hazard-conscious manner, and in compliance with the instructions given in the operating manual. Any faults which impair the safety of the plotter must be rectified at once.

The plotting system must only be used for the functions described in the operating manual.

Any other use above and beyond that described in the operating manual is deemed improper use. The manufacturer accepts no liability whatsoever for any damage caused by improper use. The user will be held solely responsible for such risks.

The plotting system will be used by different groups of people. As such, the operating manual has been divided up into individual manuals, each containing specific information for the appropriate group. Everyone involved in the installation, start-up, operation, and maintenance of the equipment must be duly qualified and trained.

For **your safety**, it is important that you strictly follow the instructions given in this operating manual.

Safety Manual

The safety manual is of overriding importance and everyone who uses or operates this plotter must read it. The safety instructions contained therein must be complied with.

The safety handbook contains all safety data sheets, safety information, CE-certifications, product specifications

Operating Manual

The operator is in charge of the plotter for all daily work. He is responsible for the settings which can only be undertaken on the plotter and on the console. He determines, e.g., the modes of operation, such as Plot, Standby, Switch-Off, Service Scheduling, Manual Sheet Feed. Moreover, he is also responsible for ensuring that there are always enough media, such as toner and plotting material available.

User Manual

The user is a PC workstation and is part of a network group which has been given access to the plotter. The user has printer drivers installed which allow it to print directly from appropriate applications such as MS-OFFICE, AUTOCAD, etc. The user also has client software which allows it to compile so-called plot files from archives and transmit these to the plotter as a block.

Administrator Manual

The administrator incorporates the plotter into the company's network and supports the user in the installation of the plot client and the printer drivers. He has unrestricted right of access to the plotter PC and assigns access rights to the individual users.

Service Manual

The service technician is trained by Roth and Weber and is responsible for initial installation and routine, scheduled maintenance of the plotter.

Warnings Symbols

The following terms and symbols are used throughout the operating manuals to indicate particularly important information.

Notes Important



Special information relating to the economic use of the plotting system

Caution



Special information about do's and don'ts to prevent damage.

We would point out that the names of software and hardware mentioned in this manual, and the respective companies' proprietary names are generally protected by trademark, brand name or patent laws. Windows 95, Windows 98, Windows 2000, Windows ME, and Windows NT are registered trademarks of the Microsoft Corporation. AutoCAD, AutoCAD LT, and AutoSketch are registered trademarks of the company Autodesk Inc.. Adobe, the Adobe Logo, Acrobat, the Acrobat Logo, and Acrobat Reader are trademarks of Adobe Systems Incorporated. All other trademarks mentioned or shown in this manual are proprietary to the respective owner and are accepted as being protected.

Table of contents

Introduction	6
Generating print jobs from plot archives	8
Generating print jobs from the scanner	9
Generating print jobs from applications programs	10
PlotAdmin (Administration)	12
PlotSupport (Settings)	13
Folding Program Editor (Settings)	14

Introduction

This manual contains information about how to generate a plot job. The network administrator determines which PC station in the network is given right of access to the plotter at the clearance level.

The ROWE plotter is a very versatile and productive system. A complete range of functions is available to all users. The workstation sends plot files from an archive or from an application to the plotter, either directly or via a server.

The plotter has a comprehensive plot management feature, ensuring that the plot files are plotted in the correct format at the correct time. Various tools are available to the user for creating and managing the plot jobs. These are described in this manual.

In addition to the plot files, the plotter also needs a job file, which contains detailed information about how the plot file is to be handled, e.g. number of plots, folding parameters, scale, etc. This job file is created either by a plot client, or it must be assigned to an appropriate printer driver or print queue by means of a default file.

Because of the various applications and requirements, this User Manual consists of 7 separate sub-manuals at present.

User Manual

Setplot

Setplot is a plot client which supports all functions of the plotter controller, and sends a job file together with the plot files to the plotter in a single package.

Application Printer Driver

Only the attributes available in this particular application can be transmitted to the plotter via the application printer. The job file is archived under the printer's name as a standard job file on the plotter PC.

Local Port Monitor

The local port monitor links the application printer with the Setplot plot client. Plot files are generated with the application driver and are managed locally by the Setplot plot client.

ROWEScan

The ROWEScan software is a scan client which supports all functions of the scanner, and similar to Setplot, generates job files for the plotter.

PlotAdmin

PlotAdmin is used to display the plotter status and to manage the plotter queue.

PlotSupport

Accounting data, stamps, pen tables, and banner pages are managed and generated with PlotSupport.

ROWEfold Editor

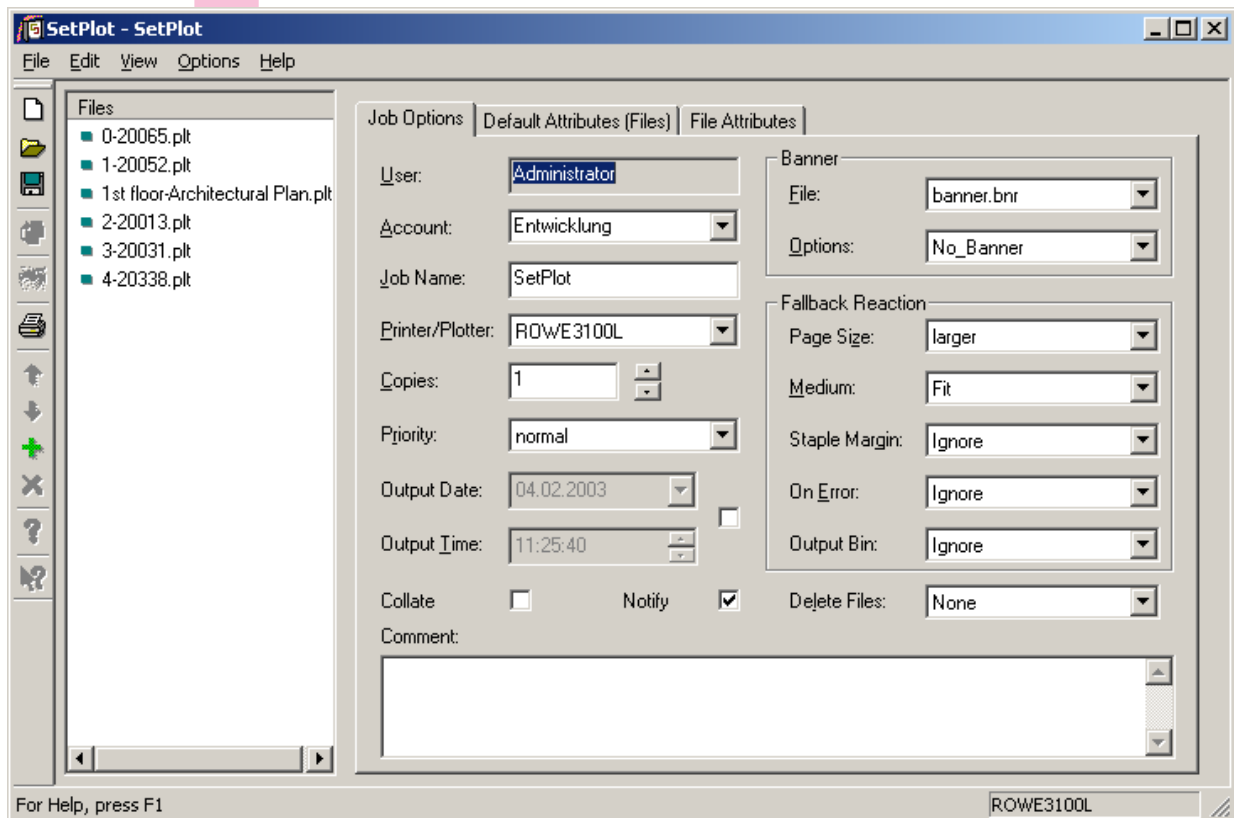
Folding programs for the online folding system are managed and new, customized folding programs are set up with the ROWEfold Editor.

Software Descriptions

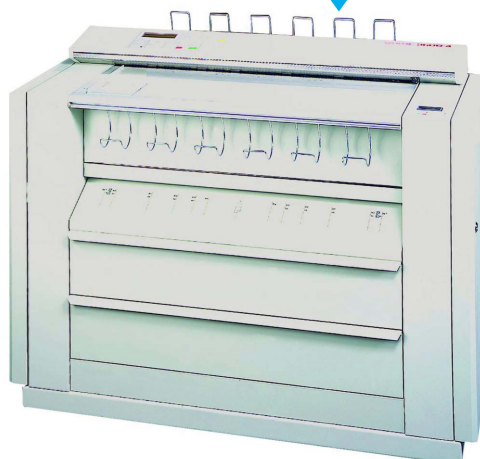
This manual describes the syntax of various program files and shows you ways of editing these program files,
e.g. job structures, label and stamp files,
pen files, banner pages, etc.

Generating Print Jobs from Plot Archives

HP-GL / HP-GL/2 / HP-RTL / Calcomp
TIFF / Cals / PCX / RLC / CGM
PostScript

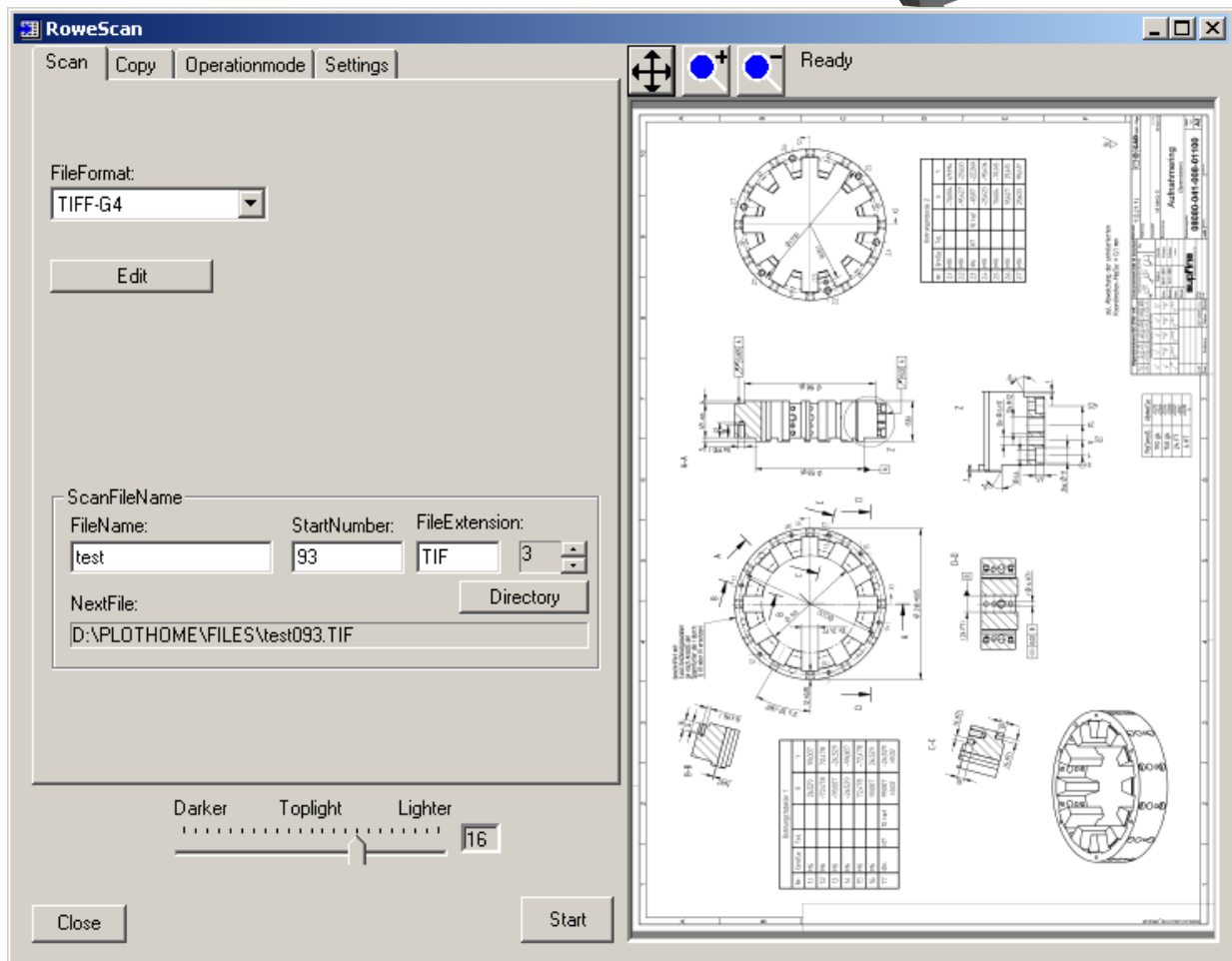


Job file



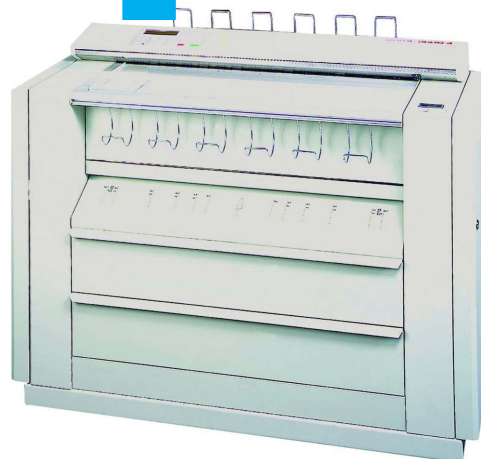
Rowe 3600

Generating Print Jobs from the Scanner



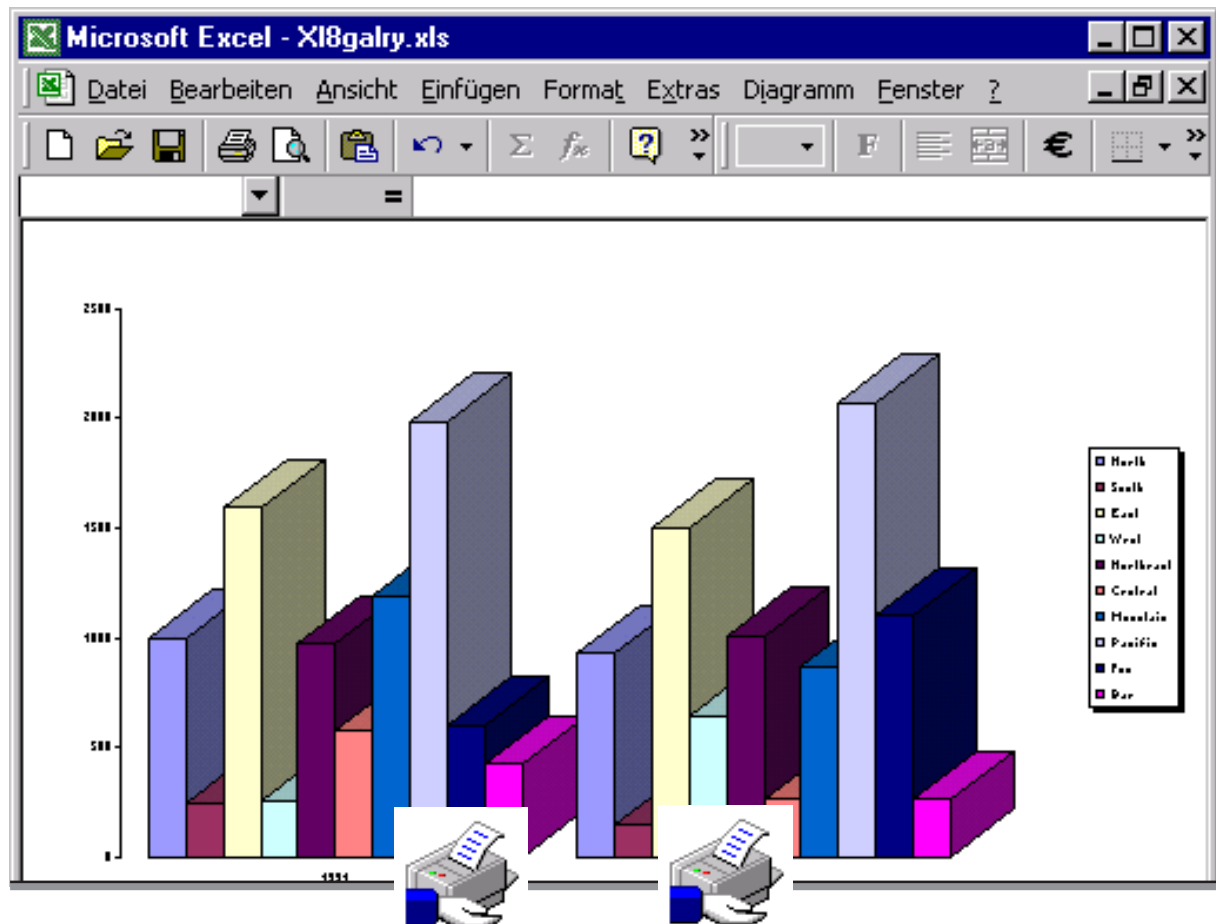
Plotter
configuration
Plotter status
Stamps
Imprints
Folding
programs

Image file with job file



Rowe 3600

Generating Print Jobs from Applications Programs Office / Excel / Word / PowerPoint, etc.



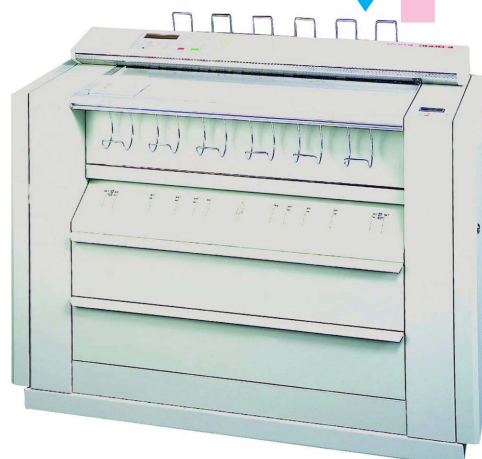
Postscript
printer driver
AdobePS
ROWE-ReproPlot 3100

Postscript
file

Postscript
file

SetPlot

Job file

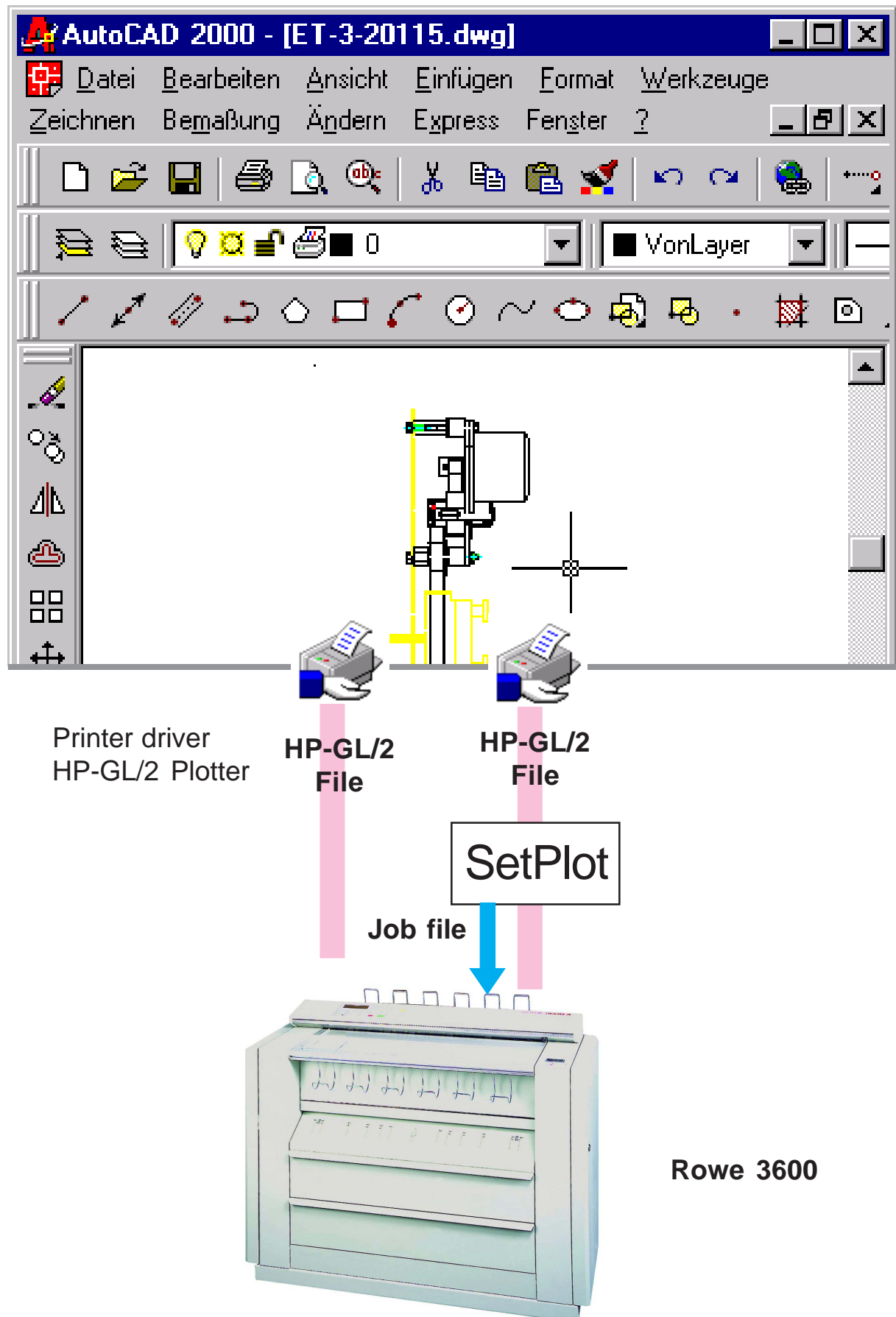


Rowe 3600

Generating Print Jobs

from Applications Programs

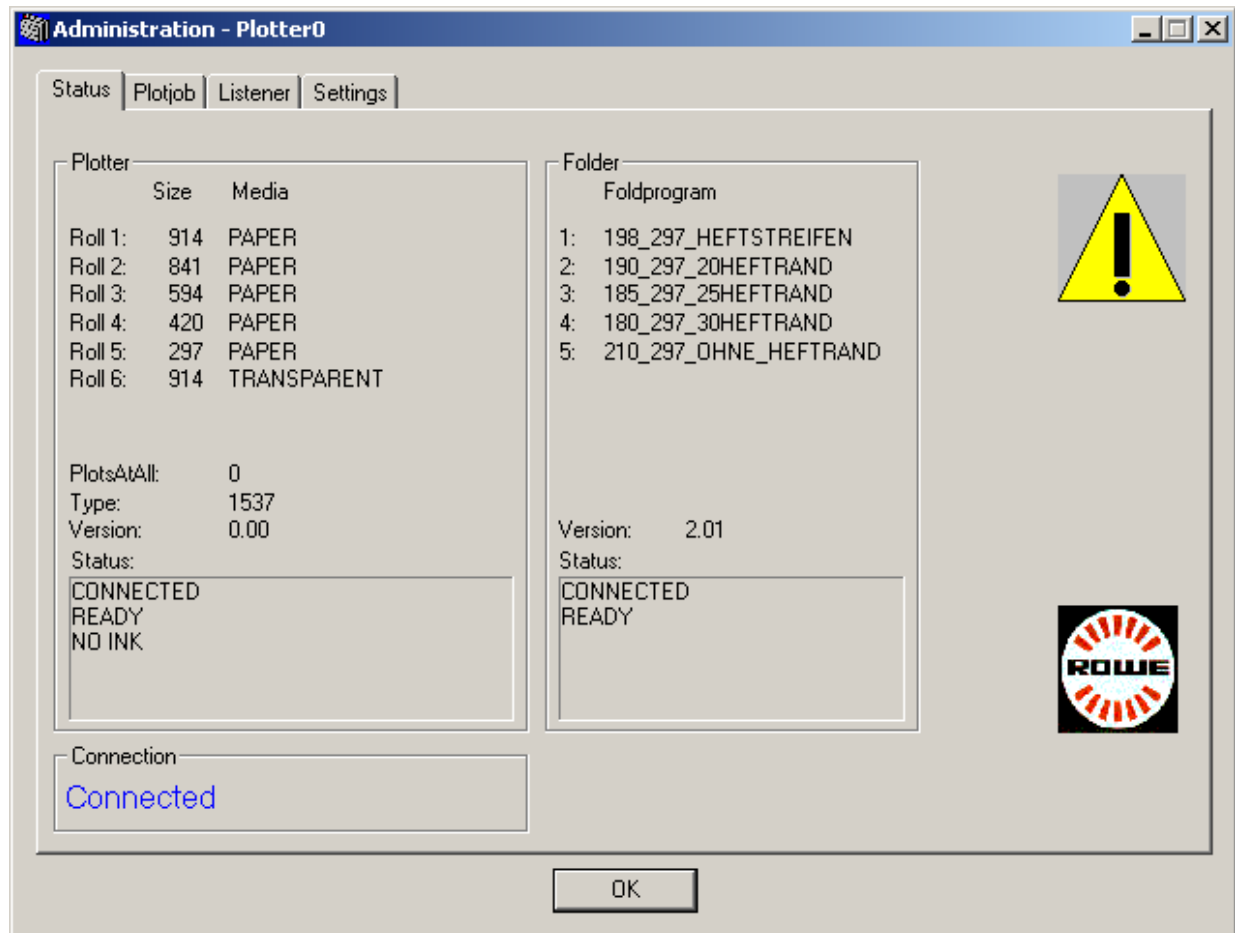
ACAD / ME10 / Solid Works / Catia / Microstation, etc.



PlotAdmin (Administration)

Display of the Plotter Status

Administration of Plotting and Copying Jobs

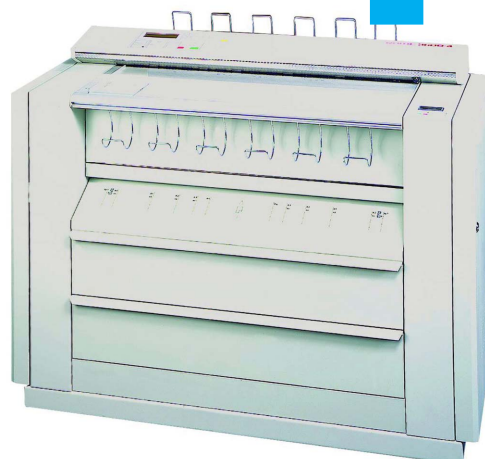


Manage plot jobs

Stop plot jobs
Start plot jobs
Cancel plot jobs
Queue management

Display of the plotter and folding data

Plotter configuration
Error messages
Job files
Job status

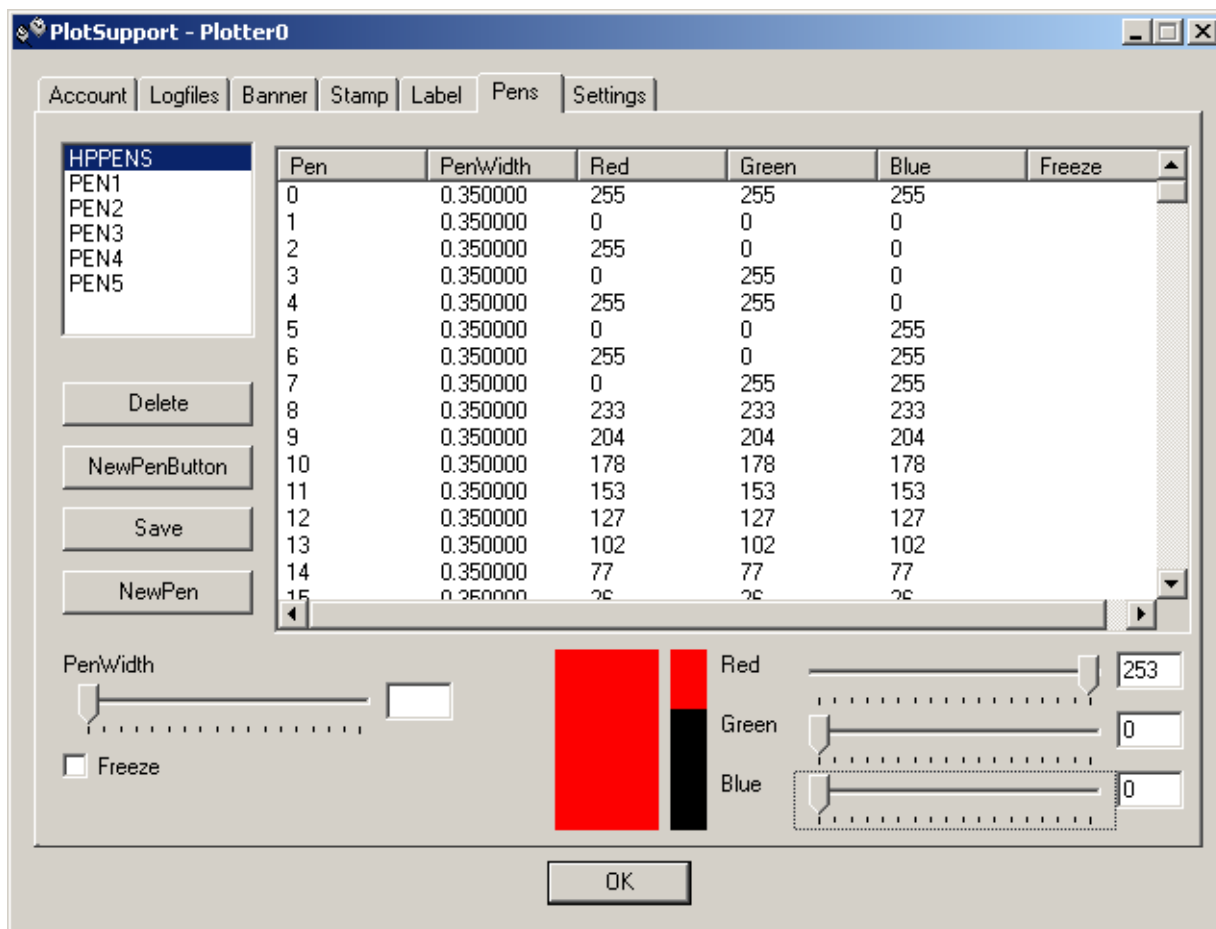


Rowe 3600

PlotSupport (Settings)

Management of Accounting Data

Defining Banner Pages, Stamps, Margin Text, and Pens

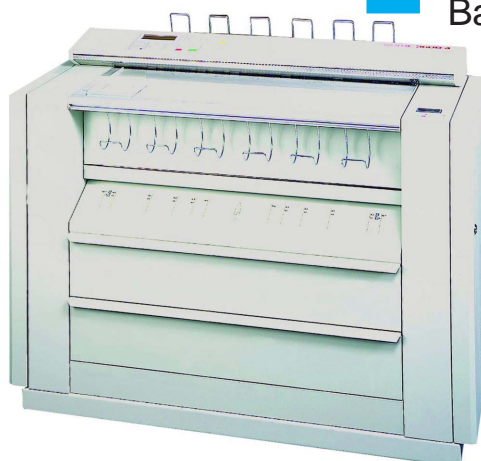


**Editing and generation
of plotter data**

Stamps /Margin texts
Banner pages
Pen parameters

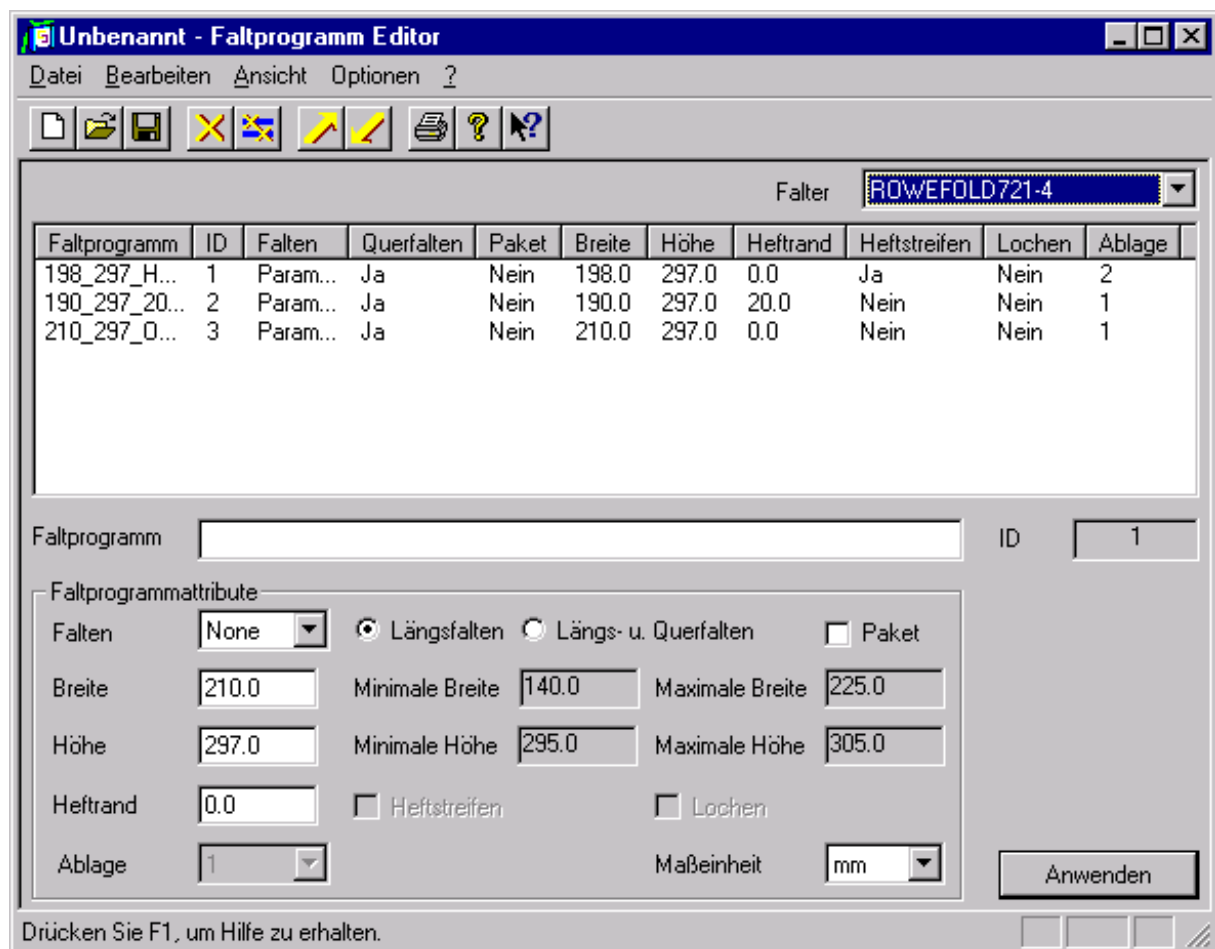
**Display of the plotter
data**

Accounting data
Pen parameters
Stamps / Margin texts
Banner pages



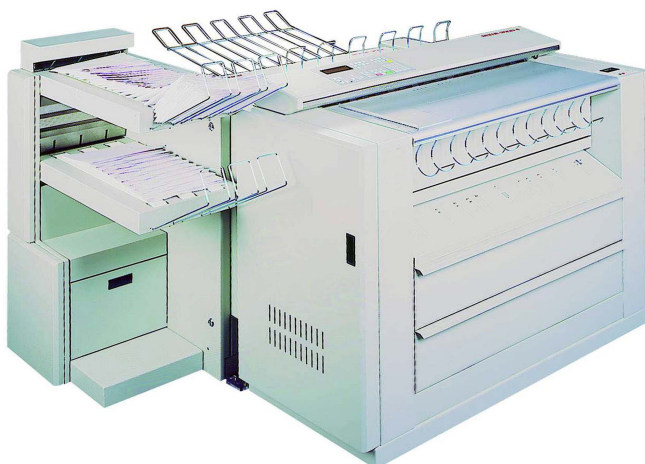
Rowe 3600

Folding Program Editor (Settings)



Generation and
editing of the
folding program
queue

Display of the
folding programs
installed on the
plotter



**Rowe 3600
with Rowefold 721-4**

Generating Print Jobs from Plot Archives

with individual job profile

