
OPERATION MANUAL

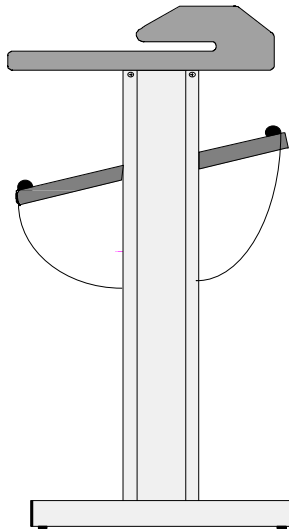


Table of contents		Page
1.0	Safety remarks	2
2.0	Technical data	5
3.0	Assembly of stand	
3.1	Assembly of stand	6
3.2	Assembly of waste paper tray	7
3.3	Screwage of machine	8
3.4	Assembly of roll-off device (option)	8
3.5	Assembly of stopper (option)	10
3.6	Assembly of table height adjuster	11
4.0	Set-up	
4.1	Set-up	12
4.2	Connection of machine	12
4.3	Switch-on	13
4.4	Materials cutable	14
5.0	Cutting	
5.1	Cutting	15
5.2	Guiding plate	16
6.0	Trouble Shooting	
6.1	Alignment of cutting blade	17

Wiring diagramme

Technical modifications reserved

1.0 Safety regulations

- Read operation manual with safety notes before assembly and commissioning
- Make sure that each operator is aware about this manual
- Always keep this manual near the machine
- **Never ever short cut and mechanical or electrical separation switches**
- Make sure that the supply voltage is in accordance with the voltage indicated on the rating plate of the machine
- Do not remove any fixed screwed parts
- Make sure that no other parts will get into the machine
- **Before each intervention into the mechanical or electrical section of the machine always separate the system from the power supply**

Pull power plug!

- **Make sure that this plug may be reached easily and without any danger!**

1.1 Safety data sheets

Rejection of liability

The following rejection of liability applies to all safety data sheets contained herein. This safety data sheet was compiled to the best of our knowledge and serves as a comprehensive instruction manual for safe operation of this product.

We reserve the right to up-date all data sheets, if new information becomes valid. It is the task of the respective operator to judge on the aptitude for these informations for the compliance with safety measurements.

In case of doubt, the operation must contact the manufacturing company in order to assure himself that the safety data sheet received is in accordance with the latest technical information available. If and to which extent a restriction of liability, according to the applicable law, is permissible, we do not take any responsibility for possible inaccuracies contained in this documentation.

1.2 General

Warranty works will, as a matter of principle, only be performed by ourselves or our authorized expertized dealers.

Have all maintenances and fixings done by the service in charge.

1.3. Dangerousness of this product

This machine has been designed and built, according to the latest standards of technology as well as the approved rules of technology. Nonetheless, there might occur danger for the health of the operator or real values when using this product. This machine is only supposed to be used for those functions described in this operation manual. Malfunctions which might affect safety must, therefore, be removed instantly.

All persons engaged with the set-up, commissioning and maintenance of this machine, must be qualified accordingly and strictly follow the instructions of this operation manual.

This is for your own safety!

1.4. Remarks concerning safety and tips

In this operation manual, menacing dangers are described.

CAUTION: If not complying with these remarks, injuries might result!

1.5. Use as directed

This cutting machine is exclusively designed for cutting of media, defined in regard to their nature and their features in continuation under paragraph 4.4 (materials cuttable). Any other or additional using methods are not be viewed as directed. The manufacturer will, therefore, not be liable for any damages arising from such usage not recommended. This risk will be borne by the user exclusively.

IMPORTANT: Part of this usage as directed is also to follow all remarks outlined in this operation manual. Unauthorized modifications of this machine result in a complete refusal of any liability on the part of the manufacturer for damages arising from such modifications.

IMPORTANT: This machine must not be used in explosion-endangered surroundings.

1.6. Emission

The A-proved equivalent continuous sound pressure level of the machine is below the allowed emission values. Emission of any other kind are not produced by this machine.

1.7. Sources of danger

As a source of danger, the area of the circular blade needs to be mentioned. When complying with the remarks pointed out in this operation manual, no injuries may result.

1.8. Safety measurements at the site of installation

Sufficient illumination needs to be ensured at the working place.

CAUTION: Before starting maintenance or fixing works as well as when putting this machine out of operation for a longer period of time, the mains plug must be pulled out so to ensure that the machine will not be put back into operation unauthorizedly.

1.9. Safety set-ups

This machine can be switched off at any time by pushing the main switch.

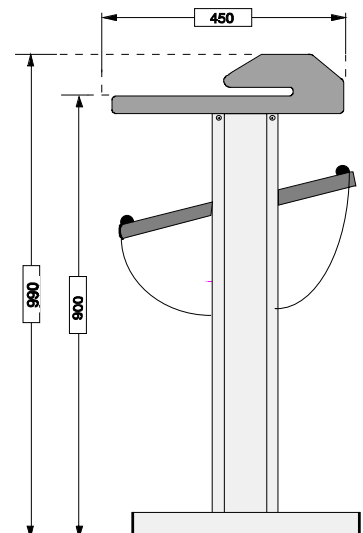
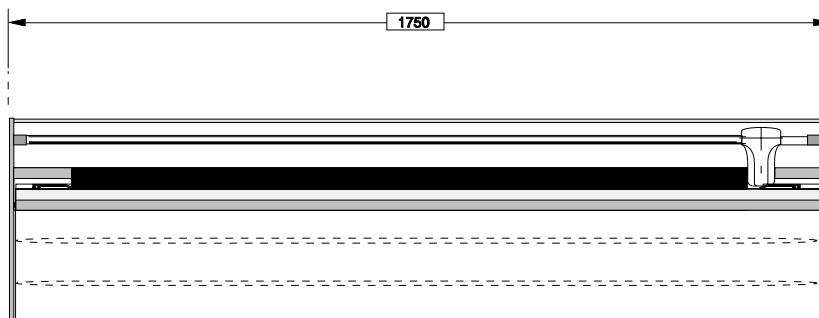
IMPORTANT: This machine may only be operated by persons who are authorized to do so and who are able to perform all works on their own independently or who will be being supervised when working with this machine. The owner must make this operation manual available to any operator and make sure that each operator has taken note of and understood the contents of this manual.

No personal safety equipment required.

2.0 Technical data

Space required for installation:	appr. 0,85 m ²
Weight:	appr. 50 kg
Supply voltage:	230 V, 1NAC, 50/60 Hz
Nominal current:	0,6 A
Supply voltage:	115V, 1NAC, 50/60 Hz*
Nominal current:	1,2 A *
Connection value:	140 VA
Sound pressure level	appr. 65 dB(A)
Cutting speed:	appr. 1,5m/s
Dimensions:	1750 x 990 x 450 mm 2250 x 990 x 450 mm (Width x Height x Depth)

* optionally available



3.0 Assembly of stand

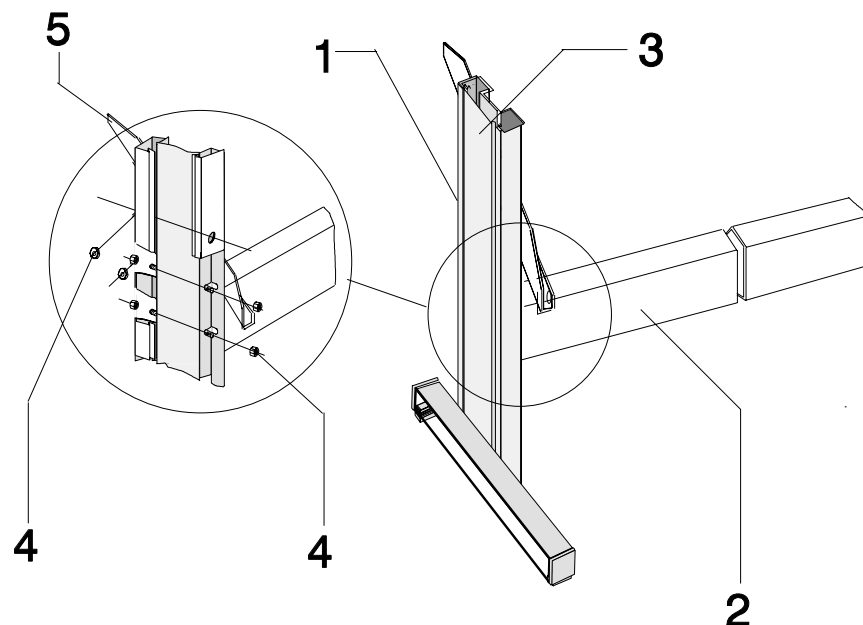
Unpack cutter and all parts of stand.

Make sure that all parts have been supplied in proper condition.

Important: Please, strictly comply with the instructions described in continuation when mounting the stand.

3.1 Assembly of stand

- A) Unpack side parts (position 1) and traverse (position 2)
- B) Pull the medium cover plate (position 3) out of the side parts.
- C) Put the traverse (position 2) with the threaded bolt into the long holes of the side parts (position 1)
- D) Fix the traverses with the hexagon nuts (position 4) at the side parts
- E) Fix the carrying consoles left and right (position 5) with the hexagon nuts (position 4) to the side parts (position 1)
- F) Push the medium cover plate (position 3) into the side parts (position 1)



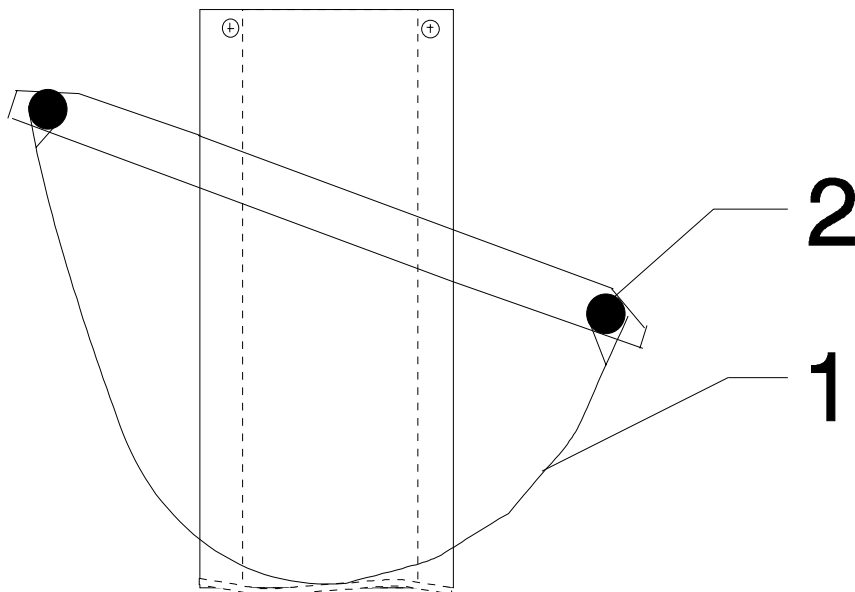
List of components of stand

- 1) side part (left and right)
- 2) cross traverse
- 3) medium cover plate (2x)
- 4) hexagon nute M5 (12x)
- 5) carrying console (left and right)

3.2. Assembly of waste paper bag

List of parts of waste paper bag:

- 1) Waste paper bag
- 2) carrying tube (2x)

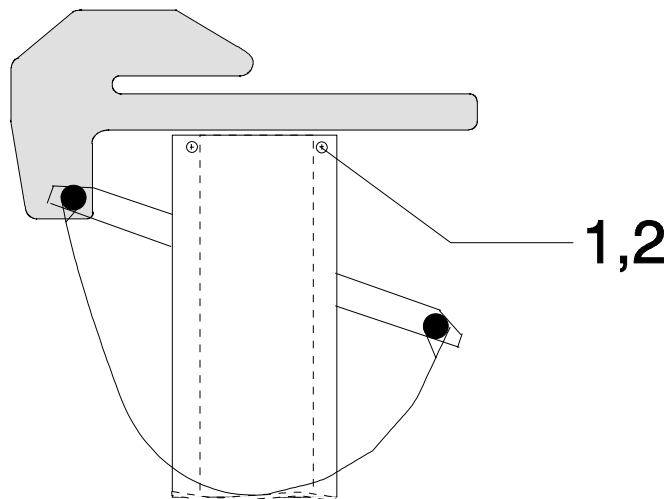


A) Führen Sie die Trägerrohre (Pos. 2) in die vorgesehenen Halteschlaufen des Papierauffangbeutels (Pos.1).

B) Legen Sie den Papierauffangbeutel in die vorgesehenen Aufnahmen der Trägerkonsolen

3.3. Screwing of machine

Put machine onto stand and screw them together.

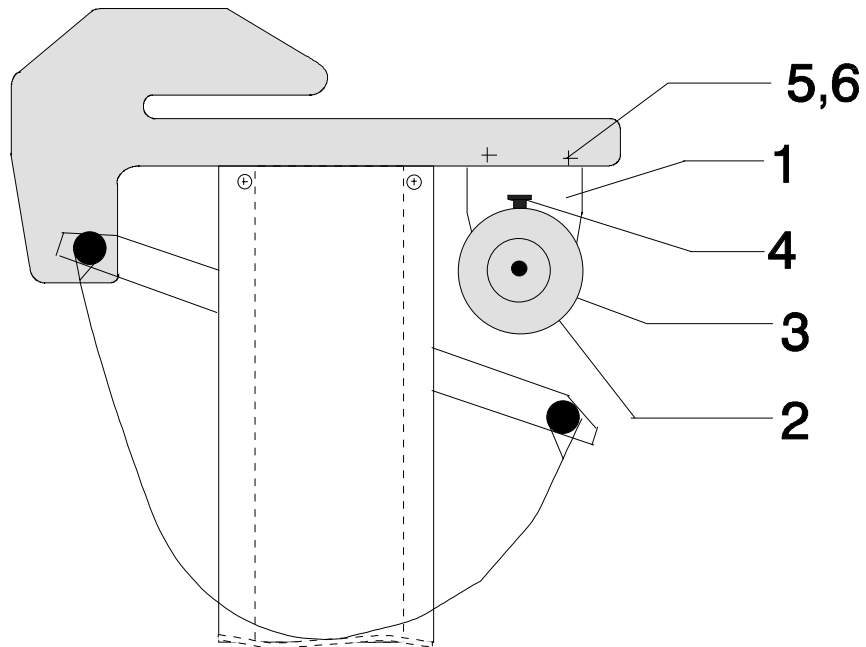


List of components:

- 1) oval head screw M6x8 DIN 7985 (4x)
- 2) serrated lock washer J 6,4 DIN 6798 (4x)

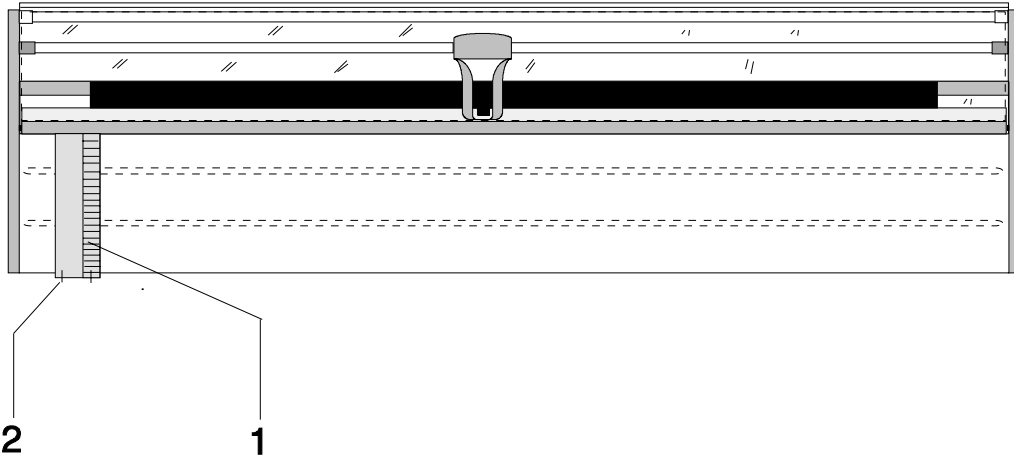
3.4. Assembly of roll-off device (option)

- 1) holding traverse (2)
- 2) paper rod
- 3) stopper
- 4) knurled screw M6x35
- 5) oval head screw M4x8
- 6) serrated lock washer J 4,3



- A) Fix holding traverses (position 1) with the oval head screws (position 5) and the serrated lock washers (position 6) to the side parts of the machine. When doing so, make sure that the collection bore holes for the paper rod (position 2) are pointing towards the inside.
- B) Push the stoppers (position 3) with their conical side towards the inside over the paper rod (position 2). Fix the stoppers with the knurled screws (position 4) to the position desired.
- C) Put the roll-off device into the holding traverses.

3.5. Assembly of stopper (option)



List of components:

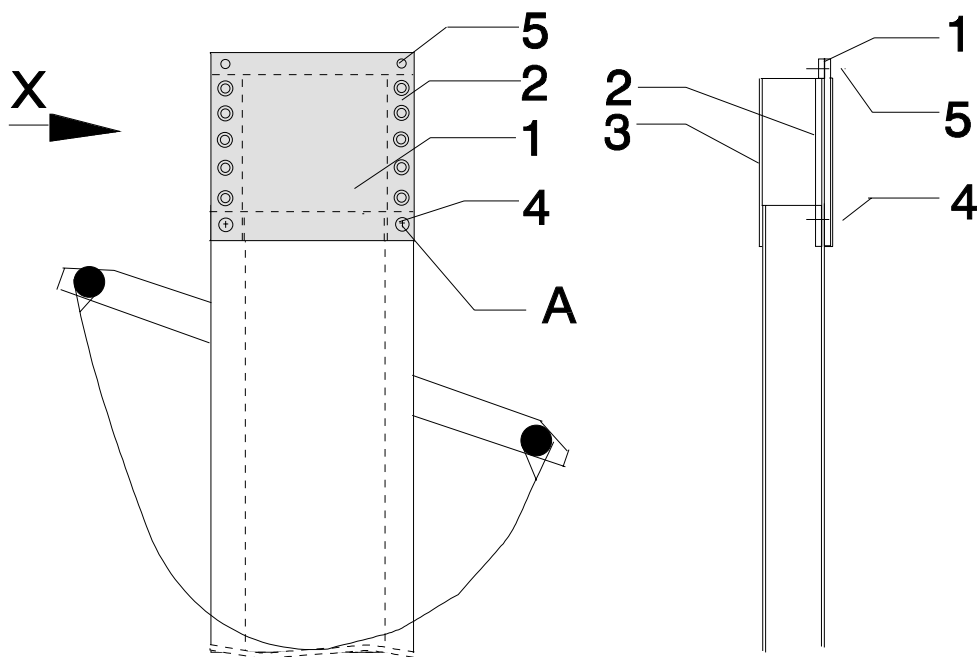
- 1) stopper
- 2) oval head screw M6x12 (2x)

- A) Put the stopper (position 1) onto the table profile.
- B) Push the hexagon nuts inside the table profile into position.
- C) The stopper is formed at its rear side in a way that they may locked angularly into the position desired in the sunked nute of the table profile.
- D) Fix the stopper with the over head screws (position 2).

3.6. Assembly of table height adjuster (option)

List of components:

- 1) adjusting plate (2x)
- 2) thread rail (4x)
- 3) screen surround left and right
- 4) flat head screw M6x12
- 5) oval head screw M6x8 (4x) -- (part of delivery of serial machine, see point 3.3, page 6)



In order to make an individual height alignment of the machine possible, an optional device for adjusting the table height is available. The working height can be adjusted in steps of 25mm each.

- A) Screw the adjusting plates (position 1) with the flat head screws (position 4) by means of the thread rails (position 2) to the stand. For doing so, there are passage holes (A) bored inside of the stand.**
- B) Make sure that the adjusting plates (position 1) will be mounted in a way that the distance brackets marked with points will be in upward direction, pointing to the middle to the stand.**

-
- C) Push the screen surround (position 3) from the outside over the adjusting plates, so that the passage holes will be pointing upwards and be equal with the bore holes of the adjusting plates in the section of the distance brackets marked.**
 - D) Fix the machine with the oval head screws (position 5), as described under paragraph 3.3. page 6, to the stand.**

4.0 Set-up

4.1 Set-up

The machine must stand horizontally and on solid ground.

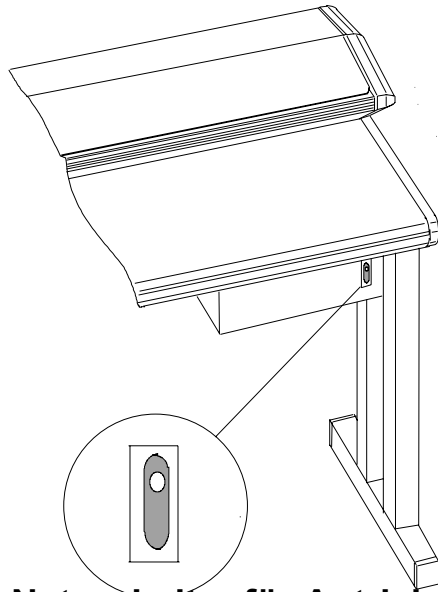
Do not put cutter with its back side to the wall. Keep a distance so that the plexi glass cover may be opened sufficiently.

4.2 Connection of machine

Check beforehand whether the supply power corresponds with the voltage indicated on the rating plate.

4.3 Switching on

The power plug for the cutter drive and the illumination is positioned beneath the left table plate. Controlling lamp will light up in on-position.



Netzschalter für Antrieb und Beleuchtung
Power plug for drive and illumination

4.4 Cuttable materials

Do not process any crushed, curved, demolished or humid masters.

Note: To avoid malfunctions, the following instructions should be strictly complied with:

- during the cutting process, the master must not be moved
- hold master at its outer edges

The following materials may be cut electrically:

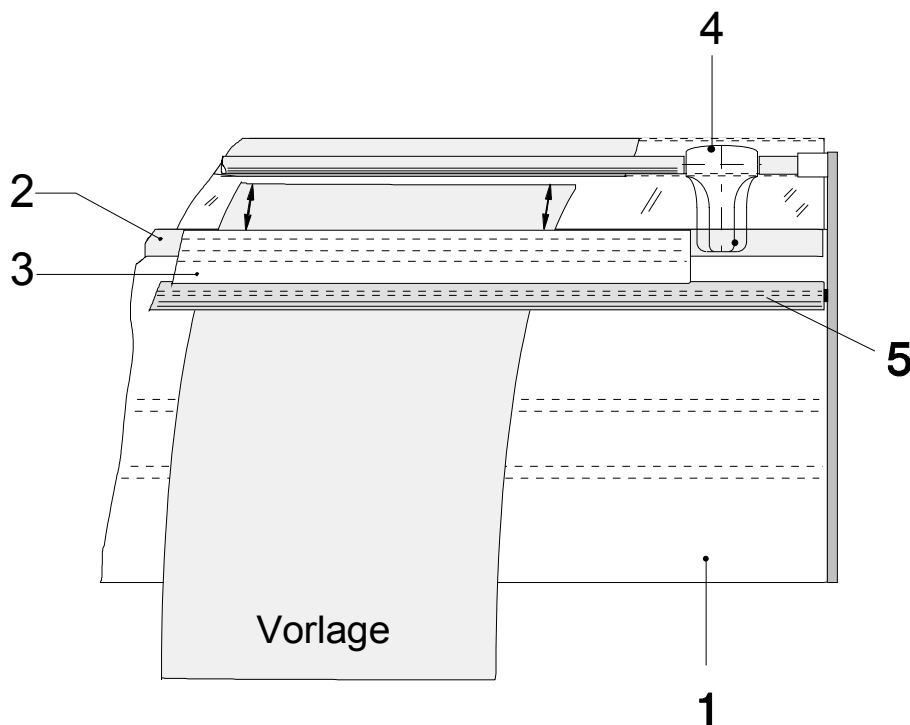
- | | |
|------------------------|---------------------------------------|
| ● Paper types | plain paper 55 - 250 g/m ² |
| ● PE / foil | max. 0,5 mm strong |
| ● transparent material | max. 250 g/m ² |
| ● carton | max. 0,5 mm strong |
| ● laminate | max. 0,5 mm strong |
| ● metal foil | depends on nature of material |

Humid or wet materials must not be cut.

5.0 Cutting

5.1 Cutting process

- The cutting process will be performed electrically.
- Push master to cutting edge
- Fix requested cutting edge
- Hold master with both hands on top of the table and push paddle or rupturing ridge
- The cutting head will cut the paper stripes



- | | | |
|------|---|---------------------------------------|
| Pos. | 1. Tischplatte / <i>Table</i> | 2. Untermesser / <i>lower blade</i> |
| | 3. Niederhalter / <i>pressure pad</i> | 4. Scheidekopf. / <i>cutting head</i> |
| | 5. Schaltleiste / <i>switching gib profil</i> | |

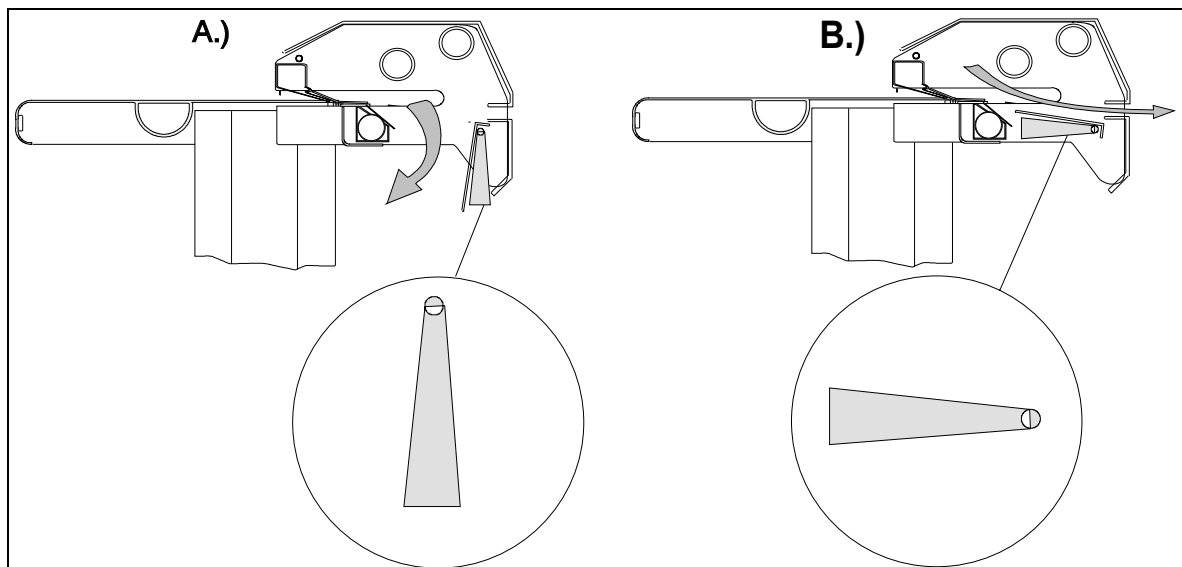
5.2. Guiding plate

A. Cutting of single masters

- For cutting of single copies, position guiding plate perpendicularly by means of the operating lever (right hand side of machine).
- Paper strips cut will be falling downwards into the collection bag.

B. Cutting of paper web

- For cutting of paper webs, position guiding plate horizontally by means of the operation lever (right hand side of machine).
- The material cut will be transported backwards through the collection bag.



6.0 Trouble Shooting

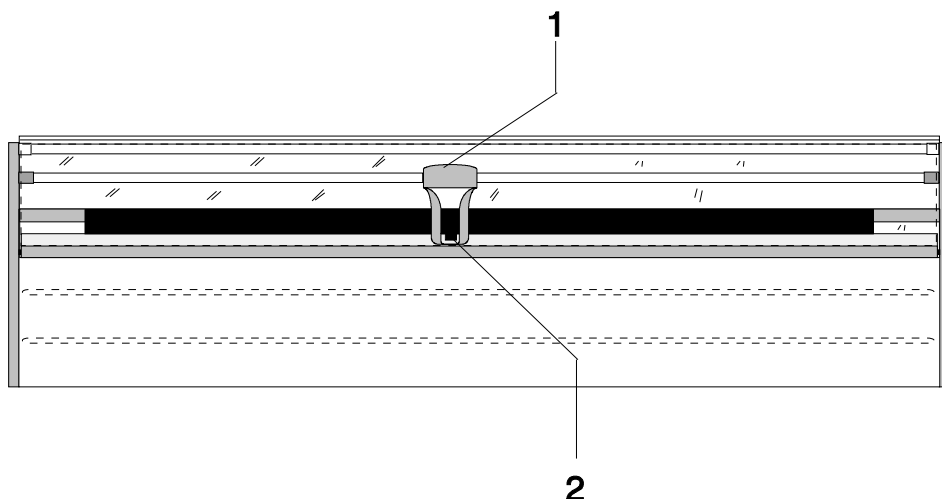
6.1 Alignment of cutting blade

If the cutting blade (circular blade) has run onto the lower cutting blade, it may be aligned again with the help of the mounting tools.

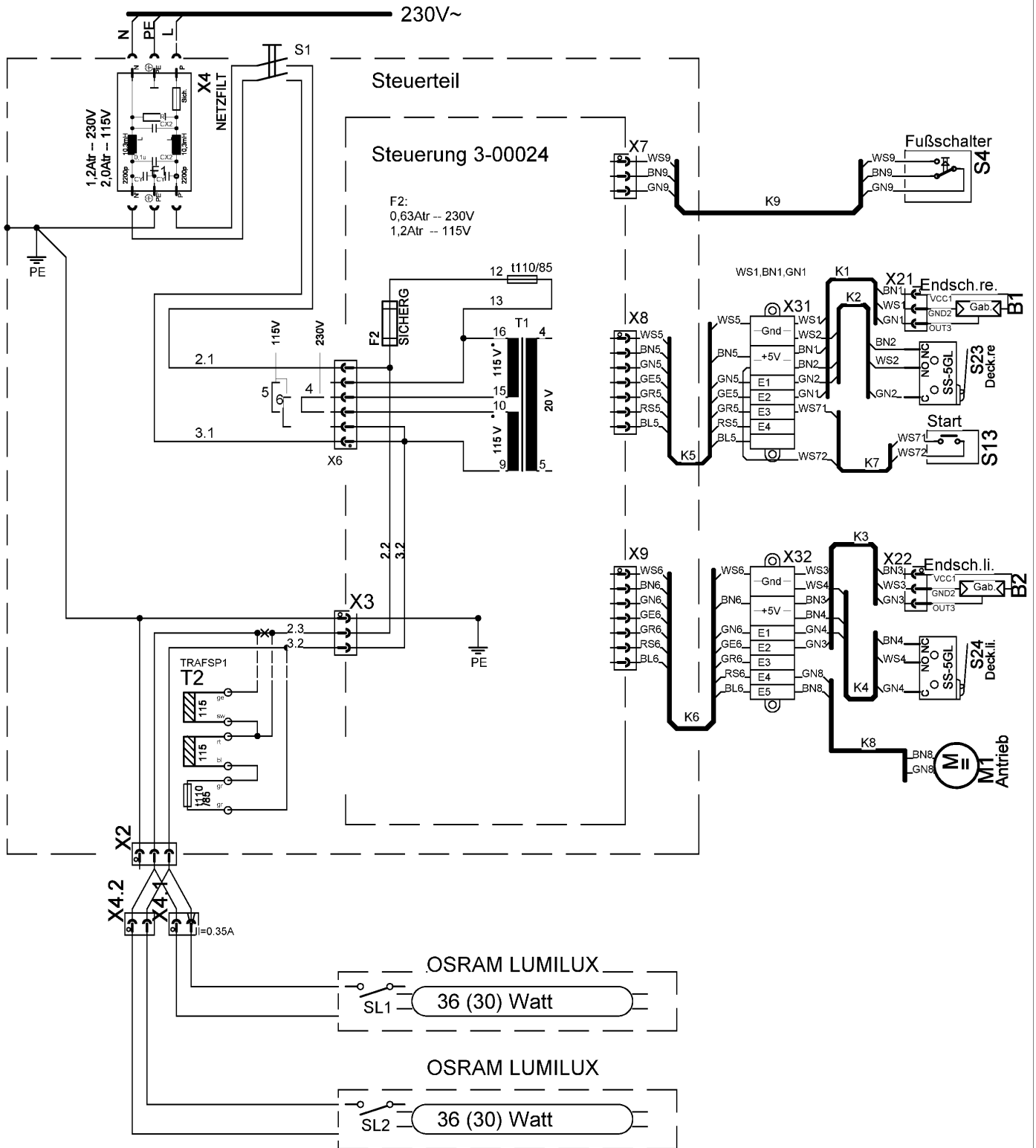
- Open upper cover and push the cutting head towards the middle of the machine.
- Move cutting head to the middle of machine and move revolving blade backwards by pressing button on axle of revolving blade.
- Simultaneously, the cutting head should be pushed backwards manually with the other hand.
- Bending of the guiding tubes favours the alignment.

Caution: The plain bearing rail in the section of the cutter head's guiding rods must not be provided with oil or grease as a matter of principle. It is recommended to clean those guiding rods with a dry, clean tissue on a regular basis.

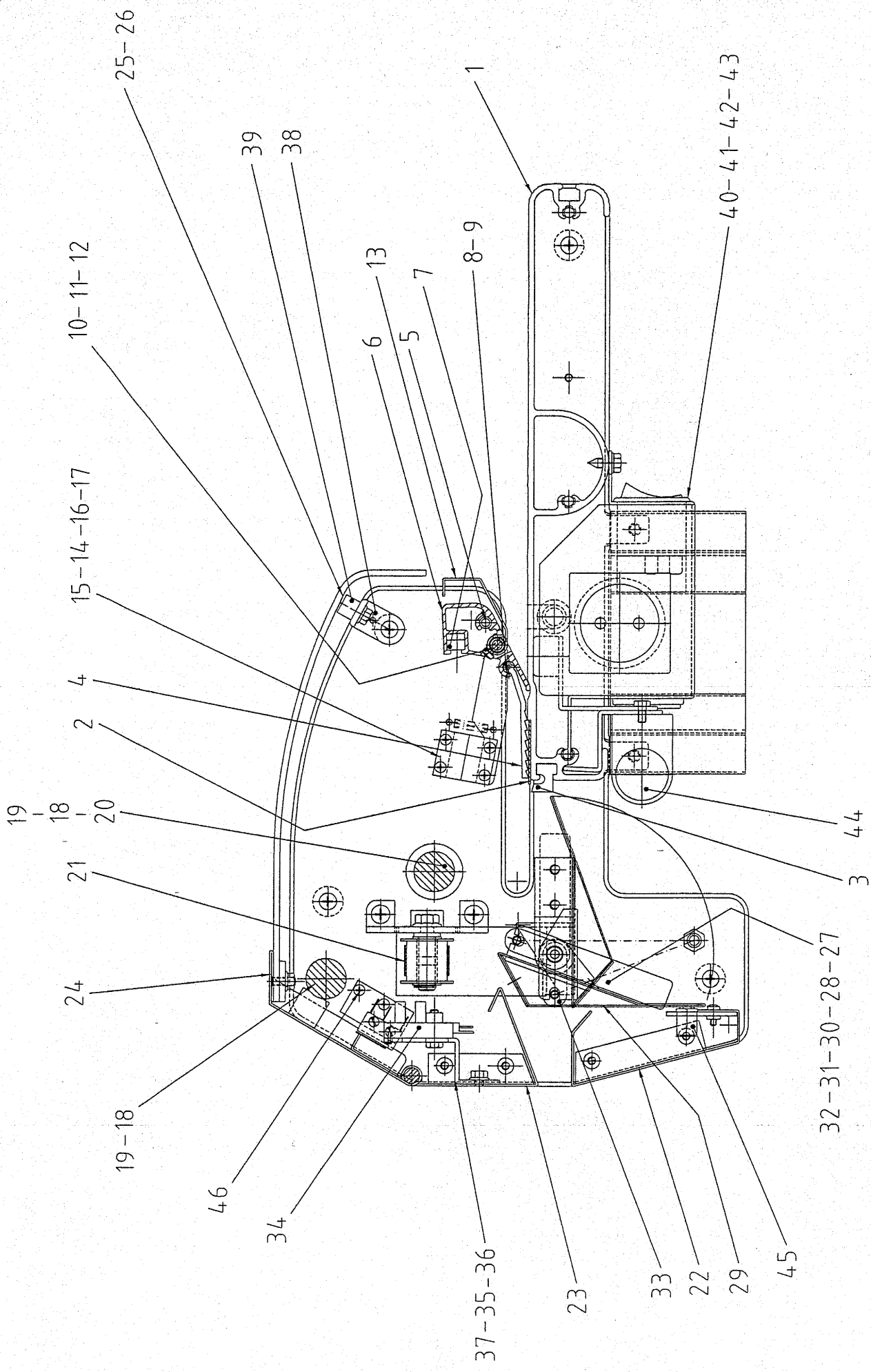
Position 1 cutting head
 2 button



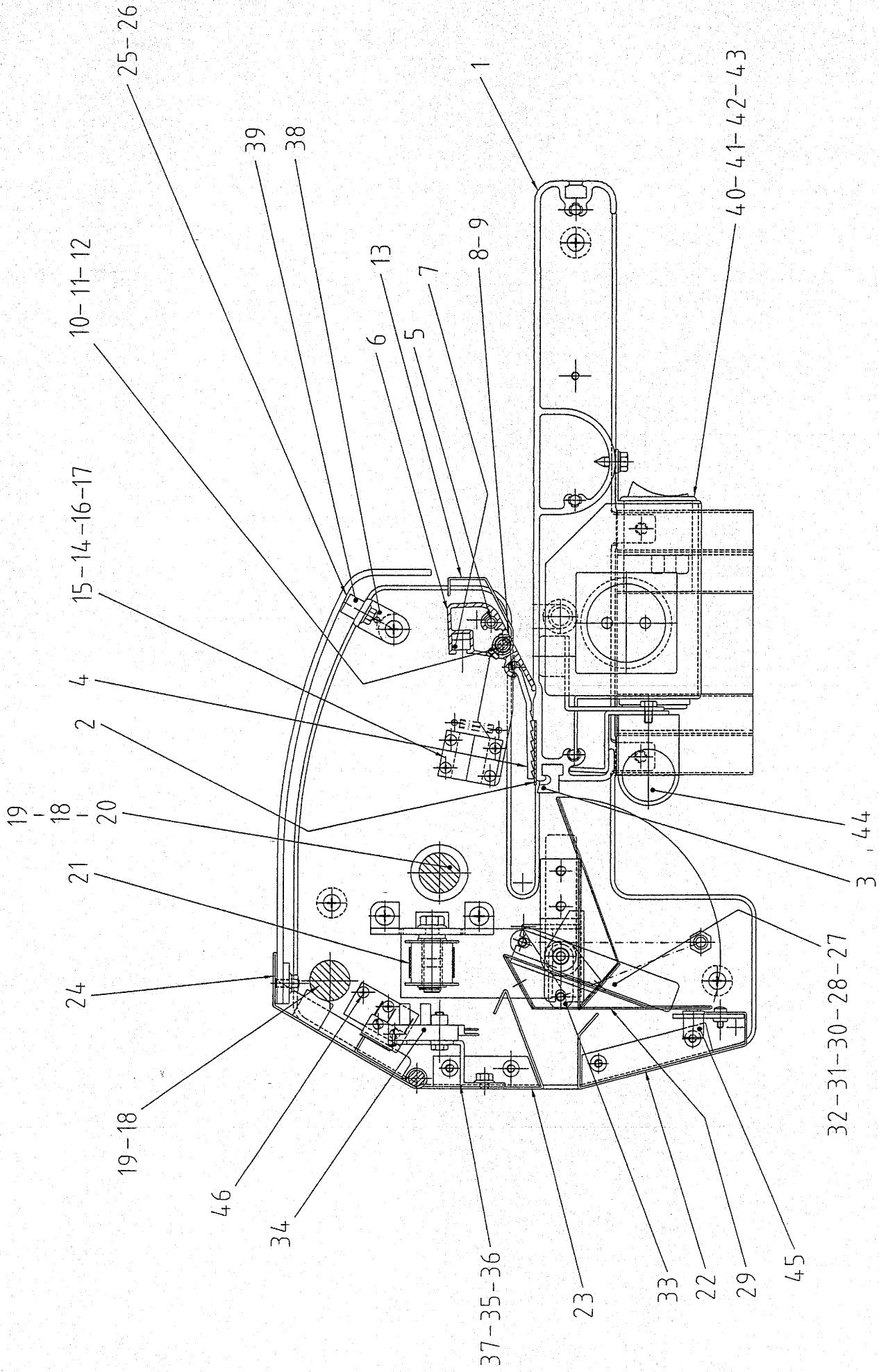
Wiring Diagramme



	Ersatzteil-Nr.	Bezeichnung	Description	Stück
1	ET 12/00/121	Tischprofil kpl. montiert	table profile compl. mounted	1
2	ET 16/00/019	Untermesser komplett	lower blade complete	1
3	ET 13/00/666	Auflaufschiene	stop ledge	2
4	ET 22/00/080	Plexiglasscheibe einzeln	plexiglass disc	1
5	ET 11/00/623	Exzenterbolzen	excentric pin	2
6	ET 15/00/305	Niederhalterprofil	holding down clamp	1
7	ET 24/00/035	Auflaufkeil	stop wedge	2
8	ET 05/00/085	Druckfeder	pressure spring	2
9	ET 00/00/083	Kerbstift 6x80mm	pin 6x80mm	2
10	ET 14/01/012	Schaltwelle kpl.	axle complete	1
11	ET 11/00/624	Distanzring	distance ring	1
12	ET 11/00/625	Buchse	bushing	2
13	ET 14/01/013	Schaltleiste	actuate ledge	1
14	ET 53/00/098	Magnetschalter	switch magnet	1
15	ET 14/01/014	Halteplatte komplett	holding plate complete	1
16	ET 11/00/626	Distanzrolle	distance roll	2
17	ET 05/00/086	Zugfeder	spring	1
18	ET 11/00/602	Führungswelle	guiding shaft	2
19	ET 01/00/203	Blindmutter M6	nut M6	4
20	ET 28/00/057	Anschlagring	stop ring	2
21	ET 31/00/073	Antriebsriemen	drive belt	1
22	ET 14/01/015	Auslaufblende kpl.	exit cover plate complete	1
23	ET 14/01/016	Auslaufblech kpl.	exit cover plate complete	1
24	ET 14/01/017	Abdeckhaube kpl. montiert	cover hood complete	1
25	ET 34/00/018	Plexiglasscheibe	plexiglass disc	1
26	ET 32/00/140	Halteband kpl.	holding belt kpl.	2
27	ET 13/00/667	Betätigungshebel	actuate lever	1
28	ET 05/00/091	Zugfeder	spring	1
29	ET 14/01/018	Umlenkklappe komplett	guiding plate complete	1
30	ET 11/00/627	Lagerbuchse	bearing bushing	1
31	ET 11/00/628	Bolzen	bolt	1
32	ET 11/00/629	Bolzen	bolt	1
33	ET 11/00/630	Schwenkhebel komplett	swing lever complete	1
34	ET 54/00/132	Sensor GP1A05-SHA	sensor GP1A05-SHA	2
35	ET 14/01/019	Lichtschrankenhalter rechts	sensor holder right	1
36	ET 14/01/020	Lichtschrankenhalter links	sensor holder left	1
37	ET 14/01/021	Befestigungswinkel	fixing axle	2
38	ET 14/01/022	Stützwinkel	axle	2
39	ET 28/00/058	Gummipuffer	rubber buffer	2
40	ET 57/00/259	Steuerung kpl. montiert 230V 50Hz	control panel compl. 230V 50Hz	1
41	ET 57/00/256	Leiterplatte kpl. 230V 50Hz	board complete 230V 50Hz	1
42	ET 57/00/262	Steuerung kpl. montiert 115V 50/60Hz	Control panel compl. 115V 50/60Hz	1
43	ET 57/00/263	Leiterplatte kpl. 115V 50/60Hz	board complete 115V 50/60Hz	1
44	ET 50/00/023	Leuchtstoffröhre 230V 36W	fluorescent tube 230V 36W	1
45	ET 18/00/054	Magnetverschluß	magnet fastener	1
46	ET 53/00/100	Mikroschalter für Abdeckung	micro switch for cover hood	2
47				
48				
49				
50				
51				
52				
53				
54				
55				
56				
57				
58				



	Ersatzteil-Nr.	Bezeichnung	Description	Stück
1	ET 12/00/136	Tischprofil kpl. montiert 2m	table profile compl. mounted 2m	1
2	ET 16/00/024	Untermesser komplett 2m	lower blade complete 2m	1
3	ET 13/00/666	Auflaufschiene	stop ledge	2
4	ET 22/00/096	Plexiglasscheibe einzeln 2m	plexiglass disc 2m	1
5	ET 11/00/623	Exzenterbolzen	excentric pin	2
6	ET 15/00/308	Niederhalterprofil 2m	holding down clamp 2m	1
7	ET 24/00/035	Auflaufkeil	stop wedge	2
8	ET 05/00/085	Druckfeder	pressure spring	2
9	ET 00/00/083	Kerbstift 6x80mm	pin 6x80mm	2
10	ET 14/01/024	Schaltwelle kpl. 2m	axle complete 2m	1
11	ET 11/00/624	Distanzring	distance ring	1
12	ET 11/00/625	Buchse	bushing	2
13	ET 14/01/025	Schaltleiste 2m	actuate ledge 2m	1
14	ET 53/00/098	Magnetschalter	switch magnet	1
15	ET 14/01/014	Halteplatte komplett	holding plate complete	1
16	ET 11/00/626	Distanzrolle	distance roll	2
17	ET 05/00/086	Zugfeder	spring	1
18	ET 11/00/631	Führungswelle 2m	guiding shaft 2m	2
19	ET 01/00/203	Blindmutter M6	nut M6	4
20	ET 28/00/057	Anschlagring	stop ring	2
21	ET 31/00/074	Antriebsriemen 4770mm	drive belt 4770mm	1
22	ET 14/01/026	Auslaufblende kpl. 2m	exit cover plate complete 2m	1
23	ET 14/01/027	Auslaufblech kpl. 2m	exit cover plate complete 2m	1
24	ET 14/01/028	Abdeckhaube kpl. montiert 2m	cover hood complete 2m	1
25	ET 34/00/019	Plexiglasscheibe 2m	plexiglass disc 2m	1
26	ET 32/00/140	Halteband kpl.	holding belt kpl.	2
27	ET 13/00/667	Betätigungshebel	actuate lever	1
28	ET 05/00/091	Zugfeder	spring	1
29	ET 14/01/029	Umlenkklappe komplett 2m	guiding plate complete 2m	1
30	ET 11/00/627	Lagerbuchse	bearing bushing	1
31	ET 11/00/628	Bolzen	bolt	1
32	ET 11/00/629	Bolzen	bolt	1
33	ET 11/00/630	Schwenkhebel komplett	swing lever complete	1
34	ET 54/00/132	Sensor GP1A05-SHA	sensor GP1A05-SHA	2
35	ET 14/01/019	Lichtschrankenhalter rechts	sensor holder right	1
36	ET 14/01/020	Lichtschrankenhalter links	sensor holder left	1
37	ET 14/01/021	Befestigungswinkel	fixing axle	2
38	ET 14/01/022	Stützwinkel	axle	2
39	ET 28/00/058	Gummipuffer	rubber buffer	2
40	ET 57/00/259	Steuerung kpl. montiert 230V 50Hz	control panel compl. 230V 50Hz	1
41	ET 57/00/256	Leiterplatte kpl. 230V 50Hz	board complete 230V 50Hz	1
42	ET 57/00/262	Steuerung kpl. montiert 115V 50/60Hz	Control panel compl. 115V 50/60Hz	1
43	ET 57/00/263	Leiterplatte kpl. 115V 50/60Hz	board complete 115V 50/60Hz	1
44	ET 50/00/024	Leuchtstoffröhre 230V 30W	fluorescent tube 230V 30W	2
45	ET 18/00/054	Magnetverschluß	magnet fastener	1
46	ET 53/00/100	Mikroschalter für Abdeckung	micro switch for cover hood	2
47				
48				
49				
50				
51				
52				
53				
54				
55				
56				
57				
58				



19
18
20

10-11-12
25-26

15-14-16-17

2
4

21

24

19-18

46

34

39

38

6
13

5
7

8-9

37-35-36

23

33

22

29

45

32-31-30-28-27

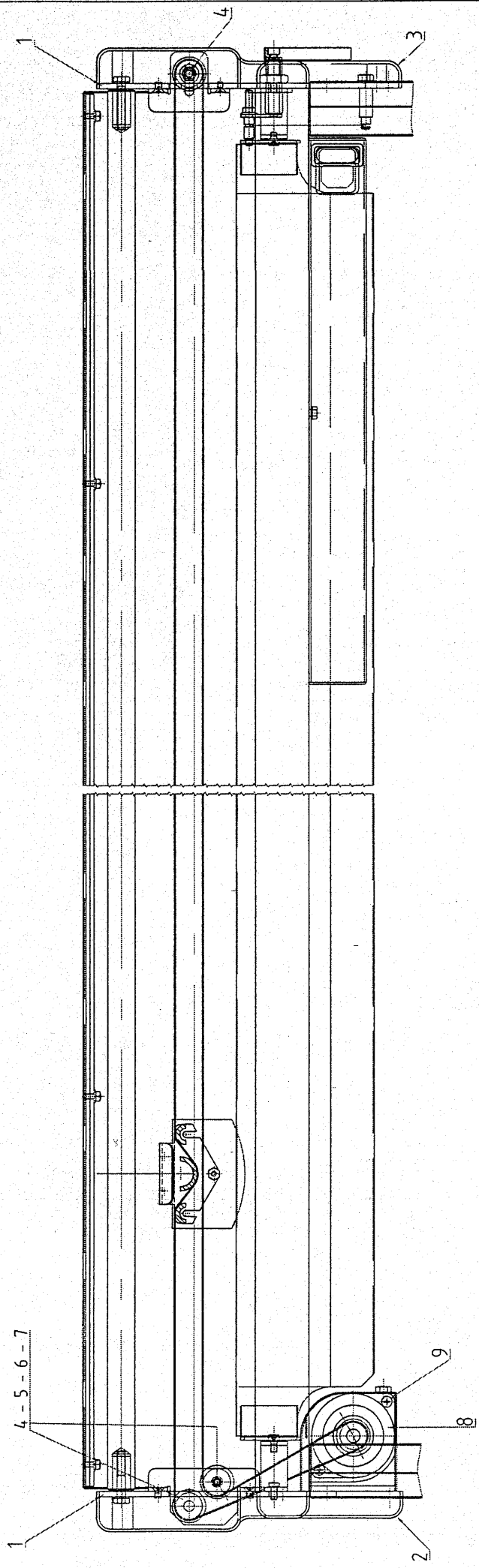
3
44

40-41-42-43

1

Bauteilaufistung Ersatzteilliste Blatt 2

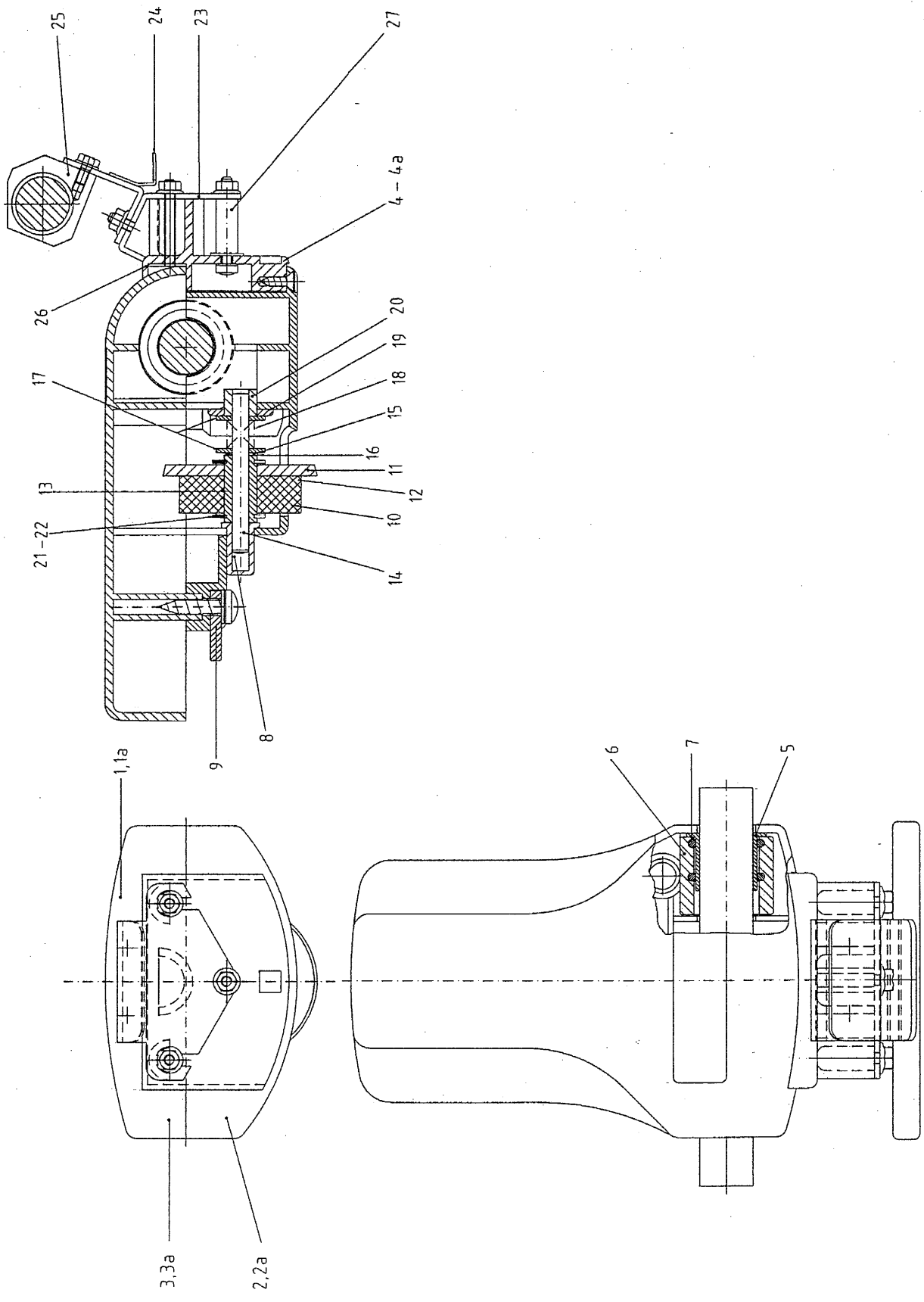
	Ersatzteil-Nr.	Bezeichnung	Description	Stück
1	ET 14/00/905	Seitenplatte links und rechts	side plate left and right	2
2	ET 22/00/094	Seitenabdeckung links	cover left	1
3	ET 22/00/095	Seitenabdeckung rechts	cover right	1
4	ET 10/00/368	Rolle kpl.	roll complete	3
5	ET 10/00/369	Bolzen	bolt	3
6	ET 70/00/278	Sicherungsscheibe 4	circlip 4	3
7	ET 01/00/202	Mutter M6 DIN 6923	nut M6 DIN 6923	3
8	ET 61/00/099	Antriebsmotor montiert	drive motor mounted	1
9	ET 14/00/023	Abdeckung für Motor	cover for motor	1
10				
11				
12				
13				
14				
15				
16				
17				
18				
19				
20				
21				
22				
23				
24				
25				
26				
27				
28				
29				
30				
31				
32				
33				
34				
35				
36				
37				
38				
39				
40				
41				
42				
43				
44				
45				
46				
47				
48				
49				
50				
51				
52				
53				
54				
55				
56				
57				
58				

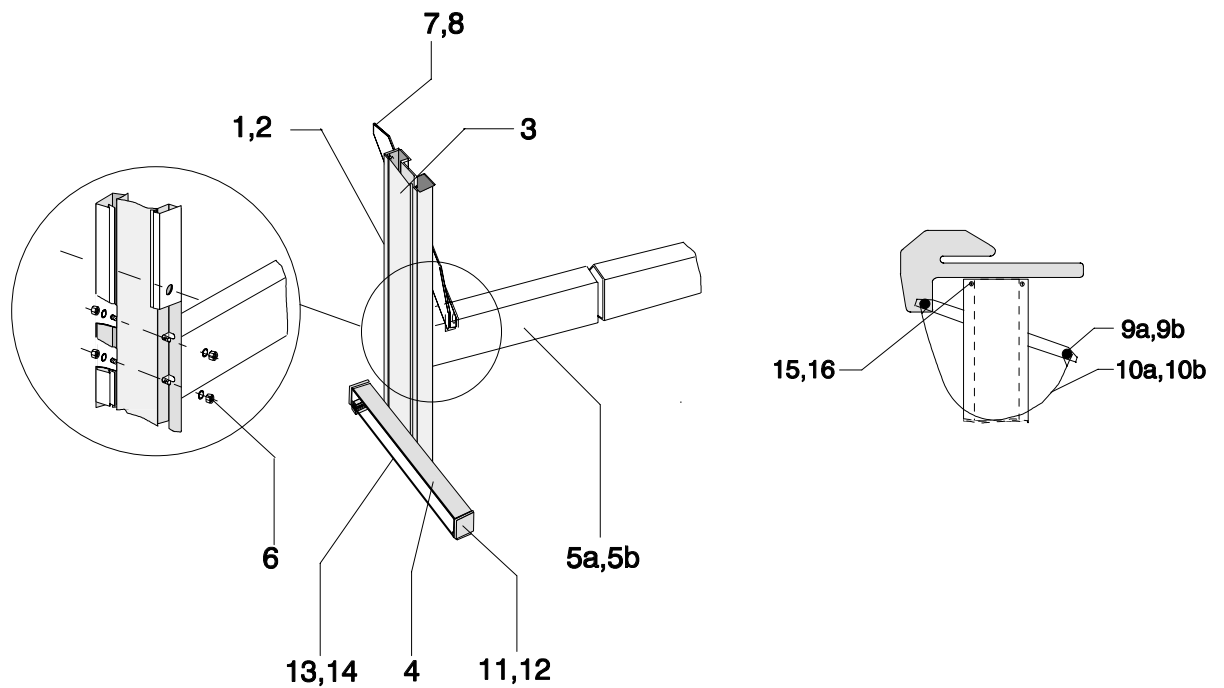


Bauteilaufistung Ersatzteilliste Blatt 3

spare parts page 3

	Ersatzteil-Nr.	Bezeichnung	Description	Stück
1	ET 15/00/306	Messerkopf montiert weiß	cutting head mounted white	1
1a	ET 15/00/307	Messerkopf montiert rot	cutting head mounted red	1
2	ET 24/00/040	Gehäuseunterteil weiß	cover, lower part white	1
2a	ET 24/00/036	Gehäuseunterteil rot	cover, lower part red	1
3	ET 24/00/041	Gehäuseoberteil weiß	cover, upper part white	1
3a	ET 24/00/037	Gehäuseoberteil rot	cover, upper part red	1
4	ET 24/00/043	Mitnehmer, weiß	traverse, white	1
4a	ET 24/00/042	Mitnehmer, rot	traverse, red	1
5	ET 04/00/049	Gleitlager JFM 2023-21	bearing JFM 2023-21	2
6	ET 15/00/309	Führungshülse	guiding hull	2
7	ET 30/00/058	O-Ring 24x3	O-ring 24x3	4
8	ET 18/00/050	Druckknopf	press button	1
9	ET 24/00/038	Führungsplatte	guide plate	1
10	ET 09/00/107	Gummirolle	rubber roll	1
11	ET 16/00/022	Kreismesser	circuit knife	1
12	ET 15/00/303	Schneidmesser kpl. mont.	cutting knife mounted	1
13	ET 04/00/046	Buchse	bushing	1
14	ET 00/00/093	Zylinderstift 6x60	cylindric pin 6x60	1
15	ET 00/00/096	Greifring G 6x1	grip ring G 6x1	1
16	ET 00/00/095	Paßscheibe D6x12x0,1	shim ring D6x12x0,1	2
17	ET00/00/046	Scheibe d 6,4 Messing	disc d 6,4 brass	2
18	ET 05/00/083	Druckfeder	pressure spring	1
19	ET 01/00/204	Scheibe 13 DIN 125	disc 13 DIN125	1
20	ET 04/00/047	Lagerbuchse	bearing bushing	1
21	ET 00/00/097	Scheibe 10 DIN 6799	cilclip 10 DIN 6799	2
22	ET 00/00/094	Stützscheibe S 12/18x1 DIN 988	washer S 12/18x1 DIN 988	2
23	ET 14/01/030	Trägerplatte kpl.	holding plate	1
24	ET 14/01/031	Schaltzunge kpl.	switch tongue	1
25	ET 04/00/050	Führungslager kpl.	bearing complete	1
26	ET 01/00/205	Schraube kpl.	screw complete	2
27	ET 11/00/261	Distanzbolzen DI 644/20	distance bolt DI 644/20	1
28				
29				
30				
31				
32				
33				
34				
35				
36				
37				
38				
39				
40				
41				
42				
43				
44				
45				
46				
47				
48				
49				
50				
51				
52				
53				
54				





Pos.	Ersatzteil-Nr.	Bezeichnung	Description	Stück
1	ET 14/01/005	Seitenteil (links)	Side part (left)	1
2	ET 14/01/006	Seitenteil (rechts)	Side part (right)	1
3	ET 14/00/755	Abdeckblech	Cover sheet	2
4	ET 14/00/756	Fußteil	Bottom stand	2
5a	ET 14/00/757	Quertraverse 1,5m Arbeitsbreite	Traverse 1,5m working width	1
5b	ET 14/01/009	Quertraverse 2m Arbeitsbreite	Traverse 2m working width	1
6	ET 01/00/061	Sechskantmutter M5	Hexagonal nut M5	12
7	ET 14/01/007	Trägerkomsole (links)	Traverse (left)	1
8	ET 14/01/008	Trägerkonsole (rechts)	Traverse (right)	1
9a	ET 14/01/010	Haltestange 1,5m Arbeitsbreite	Holding axle 1,5m working width	1
9b	ET 14/01/011	Haltestange 2m Arbeitsbreite	Holding axle 2m working width	1
10a	ET 32/00/138	Auffangbeutel 1,5m Arbeitsbreite	Reception bag 1,5m working width	1
10b	ET 32/00/139	Auffangbeutel 2m Arbeitsbreite	Reception bag 2m working width	1
11	ET 22/00/089	Lamellenstopfen 45x45 mm	Lamelle plug 45x45 mm	4
12	ET 22/00/088	Lamellenstopfen 50x25 mm	Lamelle plug 50x25 mm	4
13	ET 13/00/590	Flacheisen 140x28 mm	Bearing plate 140x28 mm	2
14	ET 01/00/515	Linsenkopfschraube M5x16	Lenticular screw M5x16	4
15	ET 01/00/163	Linsenschraube M6x8 DIN 7985	Lenticular screw M6x8 DIN 7985	4
16	ET 01/00/034	Fächerscheibe I 6,4 DIN6798	washer I 6,4 DIN 6798	4
17				
18				